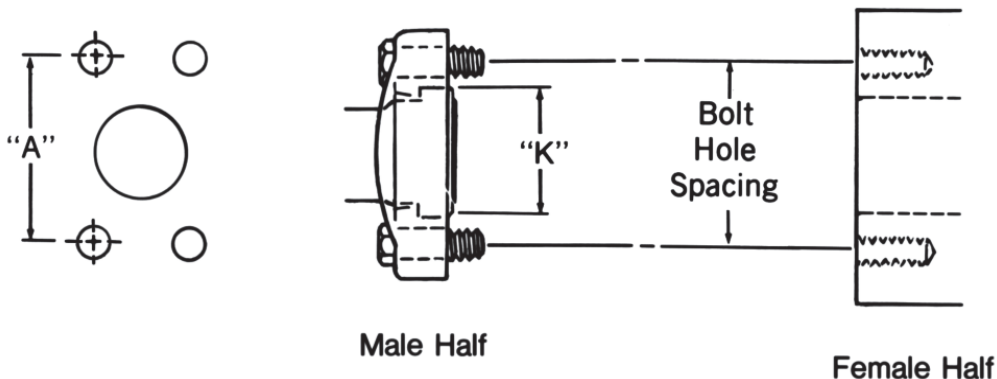




ISO Connection 4-Bolt Flange*

This connection is commonly used in fluid power systems. There are two pressure ratings. PN 35/350 bar (Code 61) is the "standard" series, and PN 415 bar (Code 62) is the high pressure series. The design concept for both series is the same, but the bolt hole spacing and flanged head diameters are larger for the high pressure, PN 415 bar connection. Both metric and inches bolts are used. The port will have an "M" stamped on it if metric bolts are required.

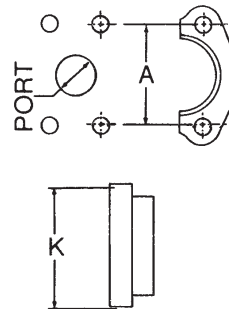
The female (port) is an unthreaded hole with four bolt holes in a rectangular pattern around the port. The male consists of a flanged head, grooved for an o-ring, and either a captive flange or split flange halves with bolt holes to match the port. The seal takes place on the o-ring, which is compressed between the flanged head and the flat surface surrounding the port. The threaded bolts hold the connection together.



*ISO/DIS 6162, DIN 20066, JIS B 8363, JIS B 8363 Komatsu Flange, and SAE J518 are interchangeable, except for bolt sizes.

Size mm (Inch) [Dash]	Bolt Dimensions mm (in)			Bolt Hole Spacing "A" mm (in)	
	Port Hole mm (in)	PN 35/350 Bar (Cd. 61)	PN 415 Bar (Cd. 62)	PN 35/350 Bar (Cd. 61)	PN 415 Bar (Cd. 62)
13 (½) [08]	12.7 (.50)	M8x1.25x25 ⅝-18 x 1¼	M8x1.25x30 ⅝-18 x 1¼	38.10 (1.50)	40.49 (1.57)
19 (¾) [12]	19.1 (.75)	M10x1.5x30 ⅜-16 x 1¼	M10x1.5x35 ⅜-16 x 1½	47.63 (1.88)	50.80 (2.00)
25 (1) [16]	25.4 (1.00)	M10x1.5x30 ⅜-16 x 1¼	M12x1.75x45 ⅞-14 x 1¾	52.37 (2.06)	57.15 (2.25)
32 (1¼) [20]	31.7 (1.25)	M10x1.5x30 ⅞-14 x 1½	M14x2x45 ½-13 x 1¾	58.72 (2.31)	66.68 (2.63)
38 (1½) [24]	38.0 (1.50)	M12x1.75x35 ½-13 x 1½	M16x2x55 ⅝-11 x 2¼	69.85 (2.75)	79.38 (3.13)
50 (2) [24]	50.8 (2.00)	M12x1.75x35 ½-13 x 1½	M20x2.5x70 ¾-10 x 2¾	77.77 (3.06)	96.82 (3.81)

Inch Size	Flanged Head Diameter "K" mm (in)	
	PN 35/350 (Cd. 61)	PN 415 Bar (Cd. 62)
½	30.18 (1.19)	31.75 (1.25)
¾	38.10 (1.50)	41.28 (1.63)
1	44.45 (1.75)	47.63 (1.88)
1¼	50.80 (2.00)	53.98 (2.13)
1½	60.33 (2.38)	63.50 (2.50)
2	71.42 (2.81)	79.38 (3.13)



Danfoss